

## CHANNEL GLAZING SYSTEM WITH HIGH PERFORMANCE COLOR COATING

Pilkington Profilit™ is a translucent linear channel glazing system consisting of an extruded perimeter frame and self-supporting cast glass channels. Enhance your channel glass design with TGP ProColor's durable, high performance color coating. A TGP exclusive in the U.S. and Canada, TGP ProColor does not require tempering and is bonded to the glass with remarkably high adhesion strength. It is available in a wide array of opaque or metallic colors with varying translucency, and in custom-blended colors.

### FEATURES - PILKINGTON PROFILIT

- May be used in interior or exterior applications
- Available in long channel lengths – up to 23 ft (7 m)
- Can be thermally toughened and heat soaked
- May be insulated with Lumira® aerogel for energy efficiency
- Aluminum perimeter frame provides additional structural strength
- Can be utilized in curved walls
- Installs vertically or horizontally
- Interior applications may be installed into wood jambs or millwork instead of TGP's aluminum framing
- Minimal maintenance
- Limited 10 year warranty
- Can be opaque or translucent

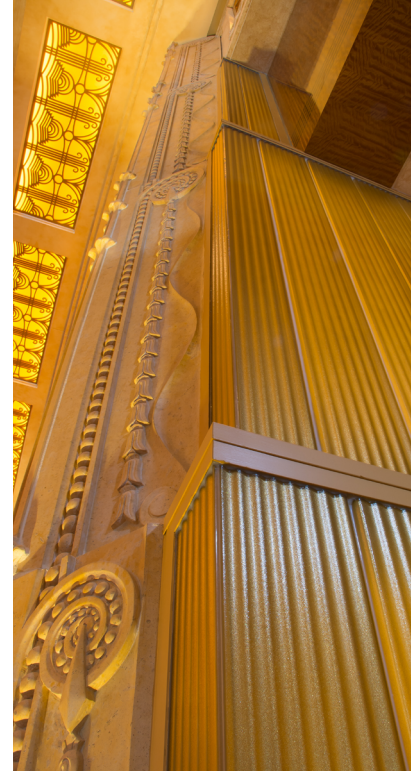
### FEATURES – TGP PROCOLOR

- High performance color coating is durable and colorfast
- Coating bonded with high adhesion strength is resistant to chipping and fading
- Available in a variety of opaque and metallic colors to match your desired color scheme (most RAL color system options are available)
- TGP ProColor coatings available on Standard (slight green) or OW (Low-Iron) glass options
- TGP ProColor coatings can be applied onto all available Pilkington Profilit textures, including Standard Cast, Macro, Slim Line, Wave and Clear
- May be single or dual glazed in a fully sealed Pilkington Profilit framing system
- May be provided with optional flood coat for added protection and opacity
- Limited 10 year warranty

Please visit [tgpamerica.com/design-options](http://tgpamerica.com/design-options) to view available Design Options.



BIM 3D Model



## GENERAL CHARACTERISTICS

<b>APPROXIMATE FACE WIDTH</b>	K22: 9.13 in (232 mm) K25 (STANDARD): 10.31 in (262 mm) K32: 13.03 in (331 mm)
<b>APPROXIMATE FLANGE HEIGHT</b>	2.36 in (60 mm)
<b>STANDARD THICKNESS</b>	.28 in (7 mm)*
<b>MAXIMUM LENGTH</b>	Up to 23 ft (varies according to windload and project requirements)
<b>WEIGHT/FT² OF CHANNEL SURFACE (INCLUDING FRAME AND COMPONENTS)</b>	12 lb / ft² dual glazed 7 lb / ft² single glazed
<b>LIGHT TRANSMISSION</b>	90% (uninsulated, varies with coating)
<b>U-VALUE (GLASS ONLY)</b>	.49 (uninsulated), .40 (Low-E uninsulated), .21 (Low-E with 16 mm Lumira aerogel insulation), .19 (Low-E with 25 mm Lumira aerogel insulation)
<b>SOLAR HEAT GAIN COEFFICIENT</b>	.70 (uninsulated), .45 (Low-E uninsulated), .42 (Low-E with 16 mm Lumira aerogel insulation), .31 (Low-E with 25 mm Lumira aerogel insulation)
<b>STC RATING</b>	42 dB (uninsulated), 44 dB (with 16 mm or 25 mm Lumira aerogel insulation)

\*6 mm options are also available. Contact TGP for further information.

Pilkington Profilit with TGP ProColor coating is not a standard stocked item. Please check with TGP for availability.

## LISTINGS/STANDARDS

Pilkington Profilit has been tested to meet the following standards:

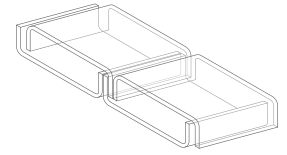
AAMA 501.4	ASTM F 588-97	NFRC 100-97	ANSI Z97.1-1984	CPSC 16CFR 1201*
AAMA 101	S.297			
AAMA 1801-97				
AAMA/NWWDA 101/1				

\*Category II (with safety film)

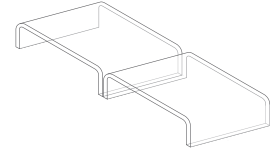
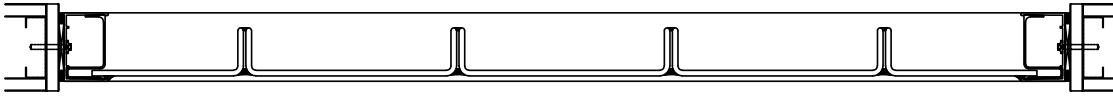
All testing carried out by Architectural Testing Inc., York, PA. Formal test results are available by contacting Technical Glass Products.

## STANDARD VERTICAL GLAZING

DUAL GLAZING - Thermally broken



SINGLE GLAZING - Non-thermally broken



## PERIMETER FRAMING SYSTEM

(Details shown are thermally broken)

