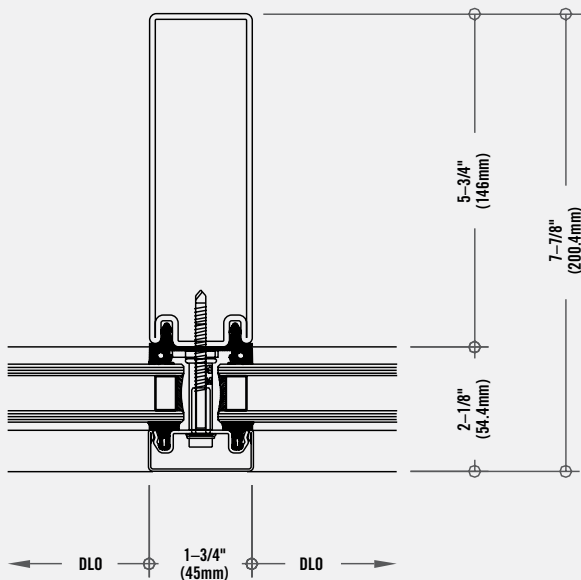


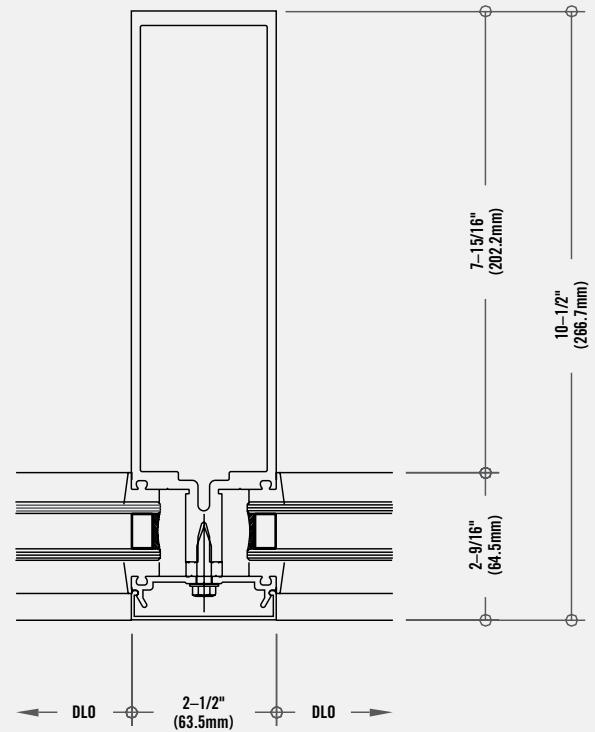
STEELBUILT VS. TYPICAL ALUMINUM CURTAINWALL		ADVANTAGE STEEL
<b>NARROW FRAME WIDTH</b>	1-3/4" (45mm) face width vs. typical 2-1/2" face width of aluminum (SteelBuilt Curtainwall also available in 2-3/8" (60mm) width).	✓
<b>NARROW FRAME DEPTH</b>	Narrow 5-3/4" back mullion using the SteelBuilt Curtainwall system vs. a required depth of nearly 8 inches for a typical aluminum curtainwall system. (SteelBuilt Curtainwall Systems are available with internal reinforcements to further reduce required frame depths).	✓
<b>LARGE SPANS</b>	20 foot span with no additional reinforcements required.	✓
<b>LARGE GLASS SIZES</b>	Considerably larger glass sizes possible when comparing the same size frame profiles.	✓
<b>DURABILITY</b>	Strength of steel profiles ensure long-term resistance to denting, scratching or deterioration. SteelBuilt Curtainwall systems can also include stainless steel cover caps for aesthetics or increased durability.	✓

**MULLION SECTION**  
STEELBUILT CURTAINWALL SYSTEM

**ADVANTAGE STEEL**



**MULLION SECTION**  
TYPICAL ALUMINUM CURTAINWALL SYSTEM



**CURTAINWALL ILLUSTRATION DESIGN CRITERIA**

- OVERALL HEIGHT:** 20' (no intermediate anchor)
- OVERALL WIDTH:** 9' 1-13/16"
- GLASS PANEL SIZE:** 36" x 79-7/16"
- DESIGN PRESSURE:** 25 PSF
- DEFLECTION:** L/240+1/4" L/175 < 13'6" L/240+1/4" > 13'6"